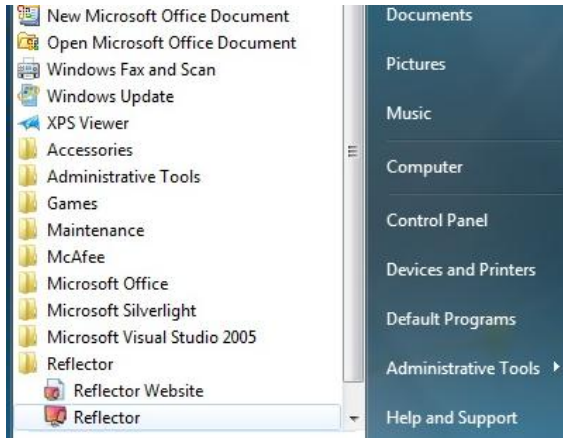
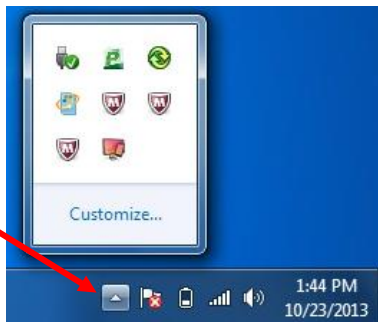


# Using Reflector

1. Go to your Start menu > All Programs > Reflector



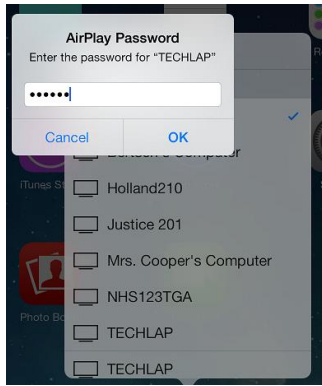
2. Click on the Reflector Icon (Nothing will flash on screen – this is normal.)
3. To check if reflector loaded, click the up arrow of the notification arrow (by the time) - if the reflector icon is show, then Reflector is loaded.



4. To Share an IPAD screen swipe up from the bottom of the screen > touch the AirPlay icon then select the computer name that you are sharing to.



5. Enter the password to share, select OK and turn the mirroring switch to On.



6. Any activity on the IPAD is then displayed on the computer screen.

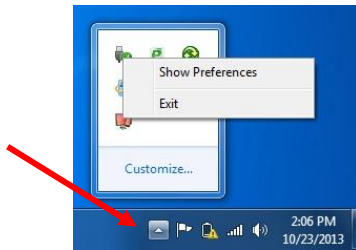


7. To stop mirroring, swipe up from the bottom of the IPAD > touch the AirPlay icon > touch IPAD at the top of the list.



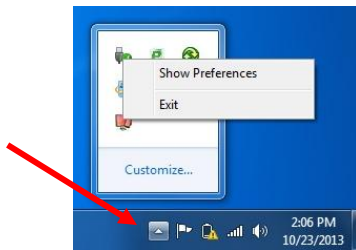
## To Shut down Reflector on the computer

1. Click the up arrow of the notification arrow (by the time), right click the Reflector icon then select Exit.



## To Reset the Reflector Password

1. Click the up arrow of the notification arrow (by the time), right click the Reflector icon then select Show Preferences.



2. When the Preferences window comes up, enter a new password and click OK.

